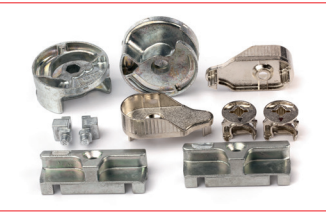
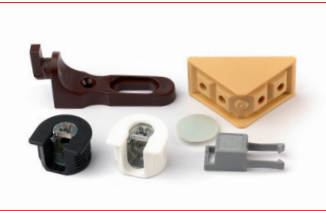


# Production



## Zinc diecasting

- | Alloys Z410 and Z430
- | 21 fully automated casting cells based on Frech DAW 5, 1x Frech DAW 20 machines
- | Part weights from 1 to 180 g
- | Full range of galvanic surfaces (external)
- | Cathodic dip coating (KTL) and lacquered surfaces



## Plastic injection moulding

- | Production with associated companies in Eastern Europe
- | All customary thermoplastics and fibreglass composites
- | Insert moulding



## Assemblies

- | Low-cost rework and module assembly in surrounding region and in Eastern Europe
- | All customary rework processes
- | Fully automatic and semi-automatic assembly

# Costumer focus

## Industrial sectors:

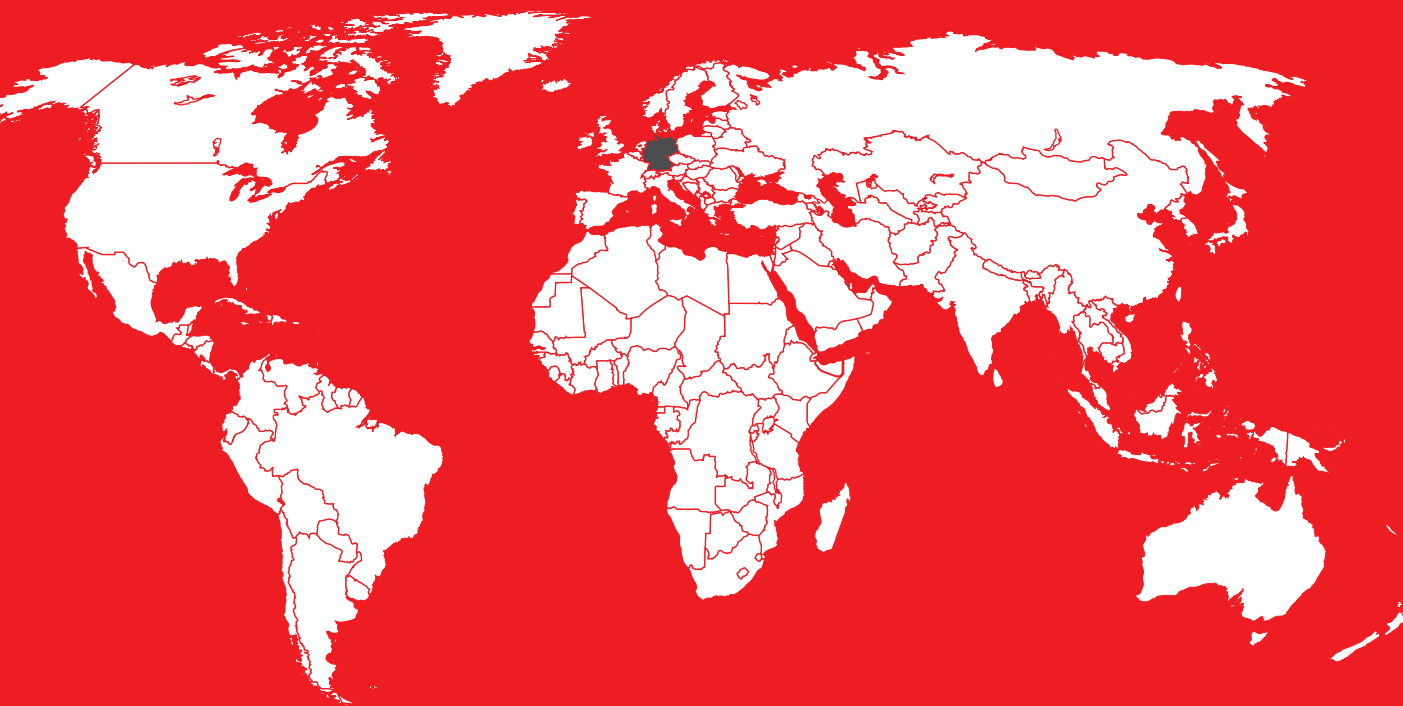
- | Large companies in furniture industry (Class A supplier to the Ikea group)
- | Traders of fittings and hardware
- | Hardware manufacturers (functional hardware/safety technology)
- | Façade and roller blind construction
- | Equipment manufacturers
- | Automotive

## Target markets

We ship worldwide with the focus on:

- | Central Europe (DE,AT,CH)
- | Southern Europe
- | Scandinavia
- | Eastern Europe (PL, RO)
- | USA, Mexico

We ship worldwide!



## Our Locations

| Administration

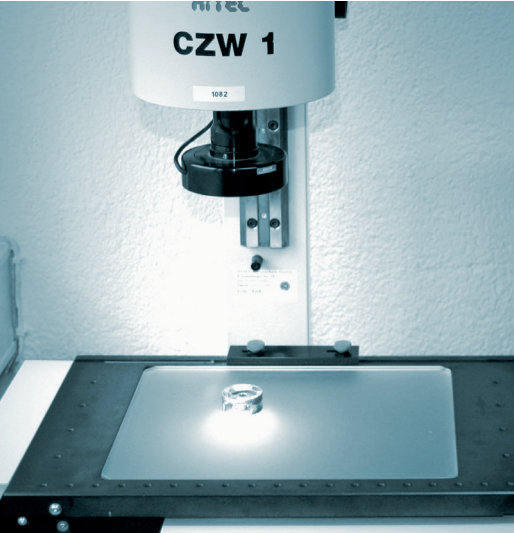
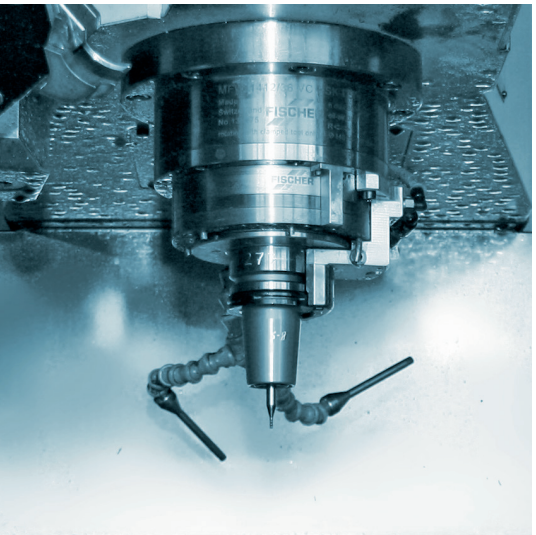
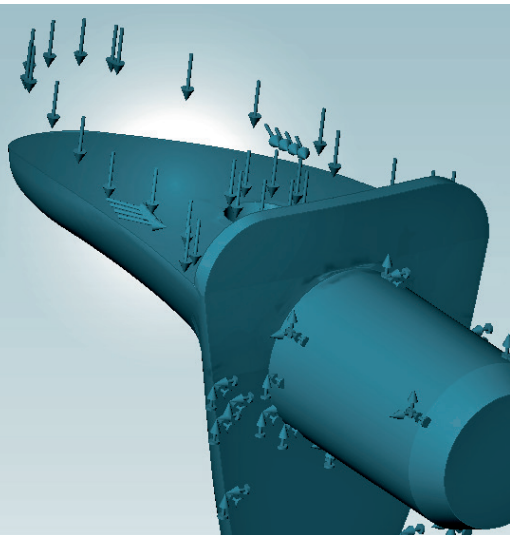
Ferd.-Porsche-Straße 46  
72202 Nagold  
Tel.: +49 (0) 7452 8394-0  
sales@gg-hardware.com

| Production

Maybachstraße 3  
72202 Nagold  
Tel.: +49 (0) 7452 8394-0  
sales@gg-hardware.com

| Logistics Center

Rottweiler Straße 100  
72184 Eutingen / Gäu  
Tel.: +49 (0) 7459 931262-0  
shipping@gg-hardware.com



**G&G Beschläge GmbH**  
Maybachstraße 3  
D-72202 Nagold

Tel.: +49 (0) 7452 8394-0  
Fax: +49 (0) 7452 970363

sales@gg-hardware.com  
www.gg-hardware.com

**G&G Beschläge**  
innovativ & kompetent



## We introduce ourselves



**Ralf Nesch**  
Managing Director &  
Owner of the  
company

Dear Business Partner,

It was with deep gratitude that we celebrated the 25th anniversary of our company in 2013. Personally I can look back on 18 very active years of responsibility to my company. I am particularly proud of the performance of my employees which enabled our company to establish itself successfully and sustainably on our target markets. We are only able to stand out against the competition by continuously developing our processes and by focusing on innovative automation solutions coupled with the associated cost management. In so doing, we can convince our customers to enter into long-term business relations with us.

Not only I am grateful to my employees but also to our costumers. They have placed their trust in us for many decades and purchase our products and services with a high demanding on quality.

As owner and managing director of G&G, which is a family-owned company with very close regional ties, I will also rely on my employees in future to continue strengthening our market position.

We promise you to continue working on our competence, innovative abilities and processes so that we can also supply you with the accustomed reliability and excellent price-performance ratio in future.

This brochure presents an abbreviated form of product and service portfolio with which we would like to win you as our long-term customer. I wish you every enjoyment reading our company profile.

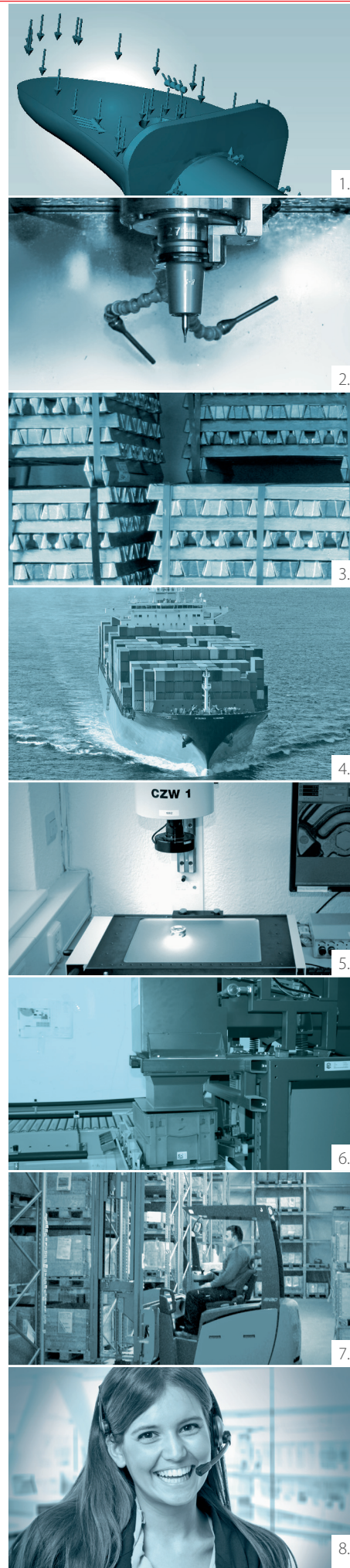
Ralf Nesch

## Facts and Figures

- | Founded in 1988
- | 70 employees, 3 locations in Nagold
- | Annual capacity of 6.000 tons of manufactured goods
- | Production of industrial connecting fittings and special parts made of zinc diecasting and injection moulded plastics, trade parts, module assembly
- | Range of furniture fittings designed in-house with product catalogue
- | In-house principle with own development and design, mould-making, production and machine construction, maintenance, fully automated packaging, logistics center
- | Fully integrated ERP, digital networking of all processes



## The G&G in-house principle



### 1. Design and Development

- | 4 employees
- | 3D CAD CAM workplaces networked with the mould-making
- | Premise of development: optimized low cost production and high, reliable quality
- | FEM calculation

### 3. Production and Machine Construction

- | 22 fully automated die casting cells, in-house construction based on Frech DAW 5 and DAW 20 machines
- | 25 employees, annual capacity 1.5 billion parts
- | Central automated surface treatment and separation
- | Server-linked real-time machine monitoring with traceability
- | Fully integrated ERP, digital networking of all processes

### 5. Quality Assurance

- | Certification to DIN EN ISO 9001 and audited by customer audits
- | Installed QM software with full ERP integration
- | In-process inspections with documentation and SPC
- | Installed environment management system based on DIN EN ISO 14001
- | Installed energy management system to DIN EN ISO 50001

### 7. Logistics

- | High-bay warehouse with 1500 storage locations and 2 retrieval units
- | Total storage capacity of 2500 pallets
- | Automated, scanner-based goods receipt postings and despatch handling
- | Full digital records of all postings/goods movements
- | Commission stock warehouse for processing small order quantities/parcel shipment

### 2. Mould-making and Maintenance

- | 10 employees
- | Over 100 moulds per year
- | 5-axis HSC milling centre with 5-axis CAM system
- | All milling machining processes performed in-house
- | Climatised mould-making shop and machines to meet high precision requirements
- | Rapid prototyping

### 4. Purchase Parts/Assembly

- | World-wide purchasing and procurement planning
- | Many years of experience in international procurement of purchased parts and supplementary products
- | Industrial components and decorative fittings
- | Partial and full automation for large unit quantities

### 6. Packaging

- | Customer-specified labelling
- | Full product traceability using barcode
- | Automated packaging on 2 packaging lines
- | Bag packaging with daily capacity of 20 t (3-shift work)
- | Small load carrier (slc) and cardboard packaging with max. daily capacity of 8 t (1-shift work)
- | Special packaging/commercial packaging

### 8. Service and Processing

- | Use of ERP-based CRM software
- | Reliable, rapid order processing using scanner-based warehouse postings
- | Customer-specific modification of our ERP system/contingent management
- | My G&G - web-based platform for online status monitoring of orders
- | Printed catalogue and e-catalogue
- | Digital invoice despatch/digital processing
- | ERP link to your system possible via data hub (EDI)

## Company orientation

## Our philosophy

### Innovation

Improving the efficiency of our company is linked to the ability to identify new opportunities and to implement them as rapidly as possible. Innovation at G&G means improving and optimising products and processes continuously with the aim of achieving an optimum price-performance ratio for our customers.

### Competence

One of our main tasks in all sectors of our company is to achieve a high level of competence so that we can maintain the cutting edge in international competition. Competence at G&G stands for know-how and the horizontal integration of development, mould-making, production, packaging and logistics. All sectors are networked to the ERP system. We work with a fully integrated, state-of-the-art resource planning system which allows us to offer our customers a complete service package.

### Environment

As a zinc diecasting company, we work with raw materials that are 100% recyclable. We regard an intact nature as the basis of our life on this planet. In addition we regard it as our responsibility to act in accordance with the economy and ecology with a view to preserving the planet for future generations. All our processes and the substances required for the manufacture of our products are continuously tested for their safety and compatibility for humans and the environment. Since we are an energy-intensive company, we systematically select tools to increase energy efficiency and reduce energy consumption.

## Management circle

