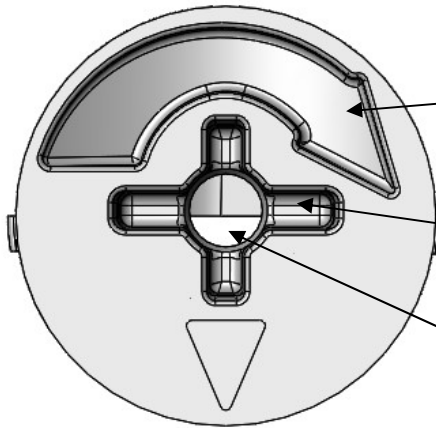
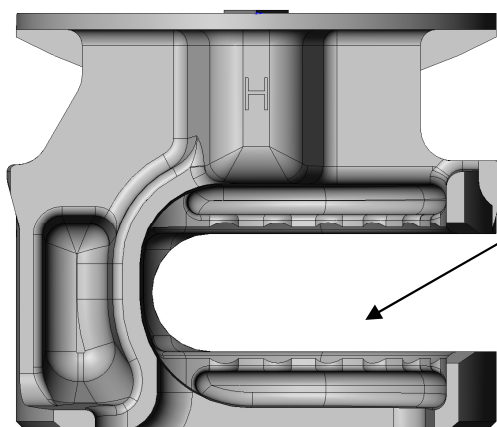
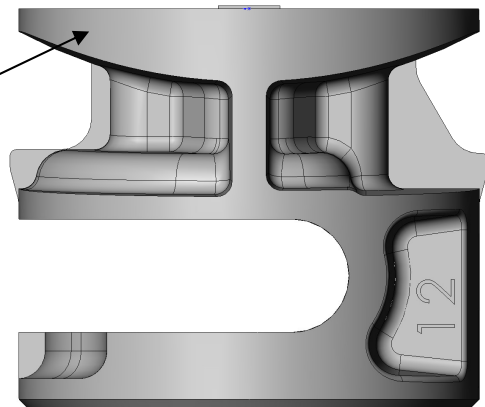


New cam generation 18620



- Fine optic with shapely turn indicator, also in stock with cover flange
- Optimized and reinforced tool seat, also available with combi-seat with allen key
- **New: Ø 3,2mm hole allows deeper insertion of the tool blade at heights of 15mm and below**

- **10% less weight with 15% more stiffness**
- Safe fixing due to claws and contact surface adequate to load



- Deviations of the drilling distance - extreme strain of the item - will be compensated by our patent-protected "circumventive" cam
- Additional form-closed fixing of the final position